

BELGIUM

ANGELO



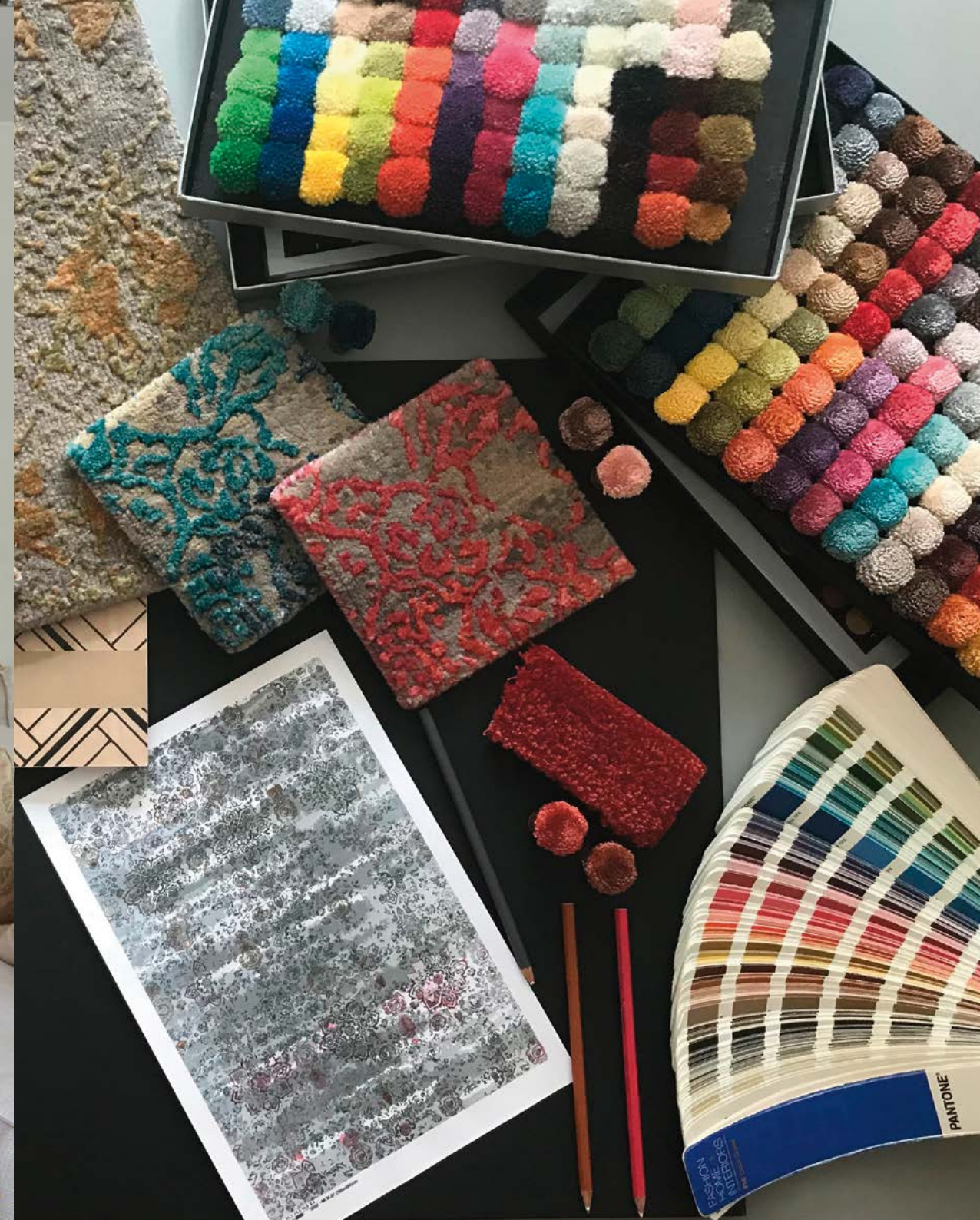
ANGELO
FINE RUGS AND CARPETS
BELGIUM

WWW.ANGELORUGS.COM

ANGELO
FINE RUGS AND CARPETS



SILKY 3059-00
CHRISMA



ABOUT US

Founded in 1999 by Fiona De Witte, ANGELO is a Belgian brand that designs, creates and commercializes contemporary rugs.



ANGELO collection offers a wide range of handmade rugs mainly: Handknotted, handwoven and tufted rugs.

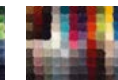
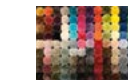
The company has built its international reputation based on its high quality, its innovative spirit and its originality.

Collections are designed to fit retailers and interior designers' targets. Specific designs are developed for projects.

BESPOKE PROJECT

Our designers' studio offers you the possibility to create your very unique and exclusive rug. You have the opportunity to either reinvent our classic with your colours, sizes and shapes, or we can create your own design. Our wide range of colors allows you to choose color combinations to suit all your needs.

Custom-made specialist, our designers will guide you throughout your project, from the selection of materials to the choice of colors.



Re-imagine the colors!



Create the perfect bespoke size!



REVENGE

Symphonies of a chaotic mind.



4850-REV632



4850-REV225

Quality:
Handknotted

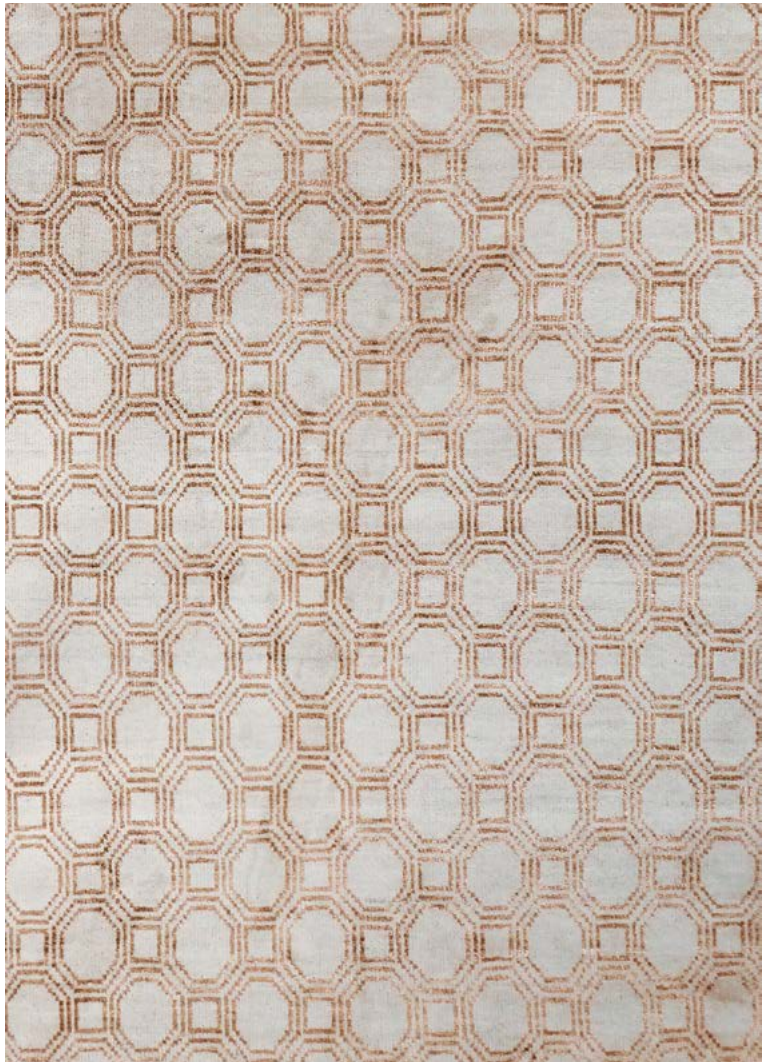
Composition:
New Zealand
Wool and
Viscose

170
x
240

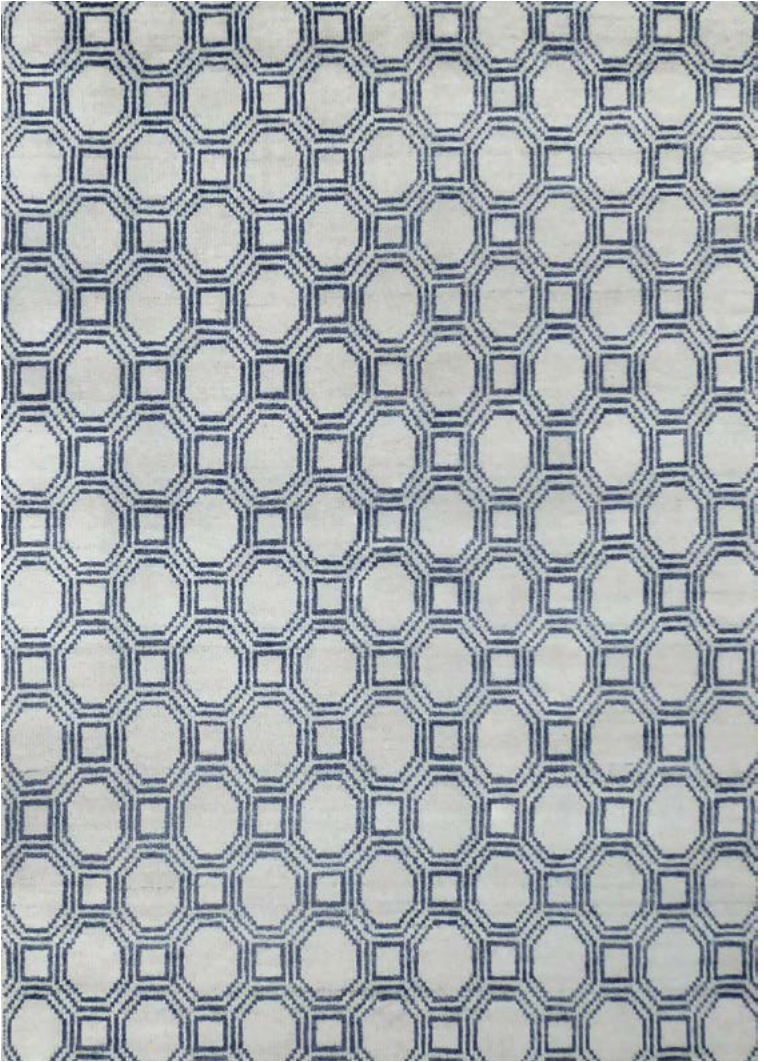


LEGACY

Refined. Design by Karine Bonjean.



4900-GEN330



4900-GEN556

Quality:
Handknotted

Composition:
Wool &
Bamboo Silk

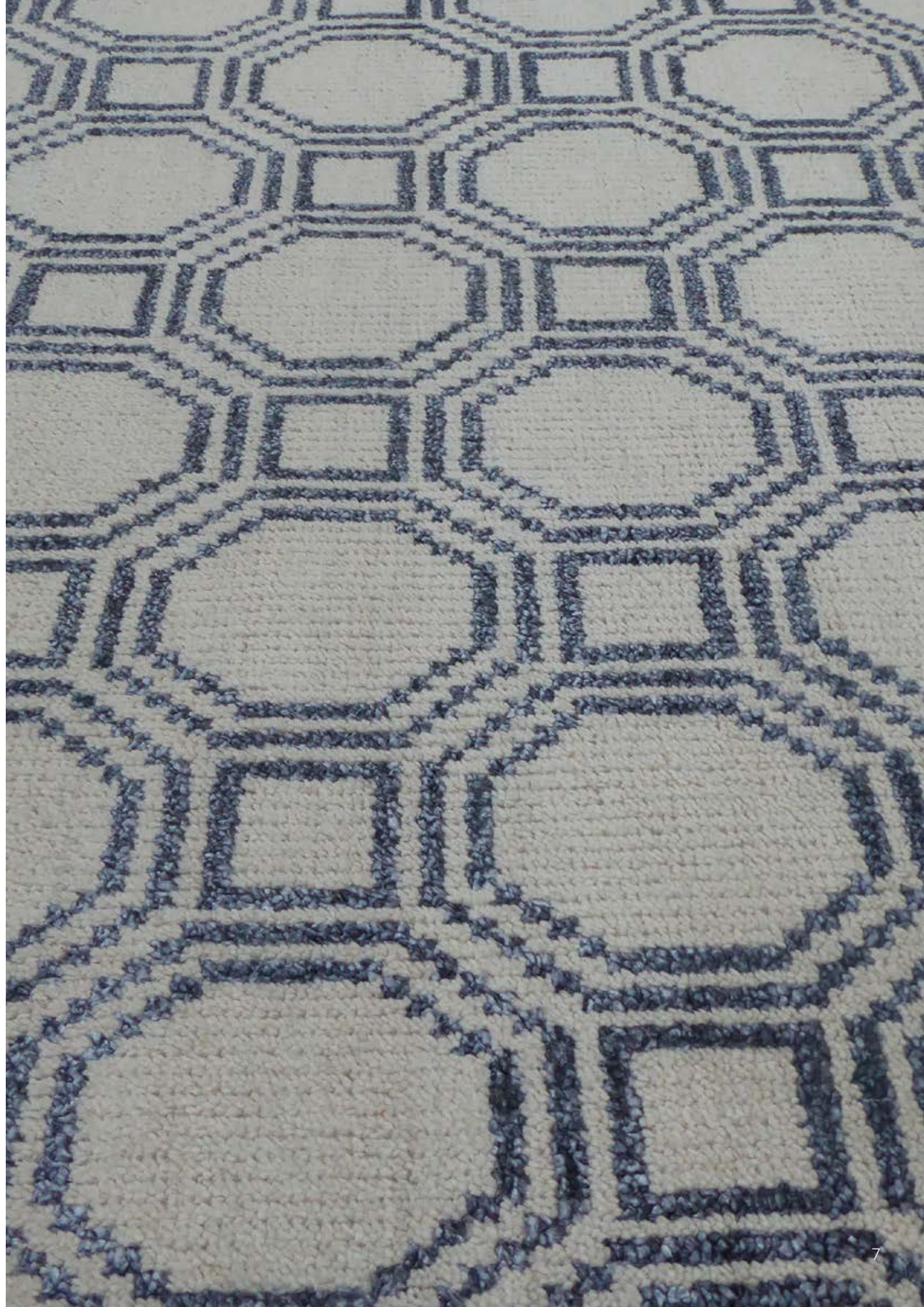
170
x
240

200
x
300

300
x
400



Photo Credit: Interior Home & Living

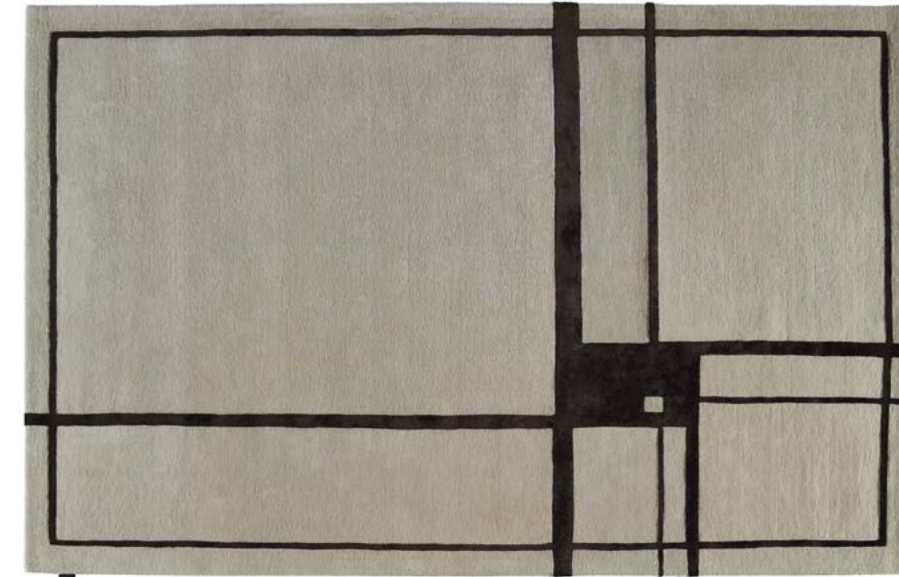




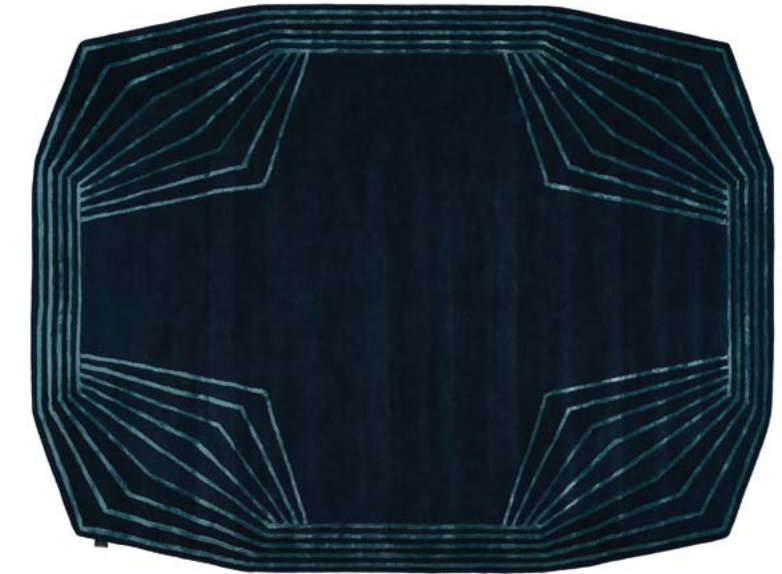
SIGNATURE THOMAS KING



His work has been influenced by a diversity of experiences ranging from the structural influencer of architect up to a love of detail.



640-TKGRT-500



640-TKDOD-225



640-TKGRT-632



640-TKDOD-632

Quality:
Handtufted

Composition:
New Zealand
Wool and
Viscose

200
x
315

GOLDEN RATIO

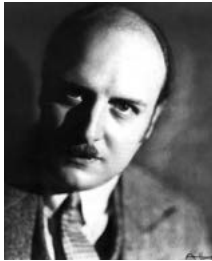
250
x
330

DODECA

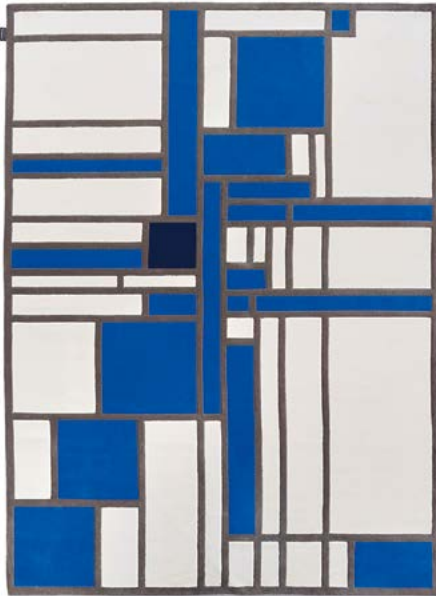


SIGNATURE

LOUIS HERMAN DE KONINCK



Iconic architect, Louis Herman De Koninck stands out by an approach based on shapes, structures and a high sensitivity with figures.



640-LHDKV1SP

JEAN-FRANÇOIS D'OR



His simple, unpretentious, logical objects appeal as much on for their evident, clearly perceptible design as well as their discrete poetry.



640-JFP4-444

JULES WABBES

Jules Wabbes is one of the main representatives of the Belgian 60s and 70s design. His sober and intemporal designs impose themselves as true classics. Editions Jules Wabbes 2010.



640-JWQD4J1

Quality:
Handtufted

Composition:
New Zealand
and Viscose

180
x
301

JEAN-FRANÇOIS D'OR

200
x
300

JULES WABBES
LOUIS HERMAN
DE KONINCK





LONDON

Fabulously rich and elegant.



Quality:
Handtufted

Composition:
New Zealand
Wool & Viscose

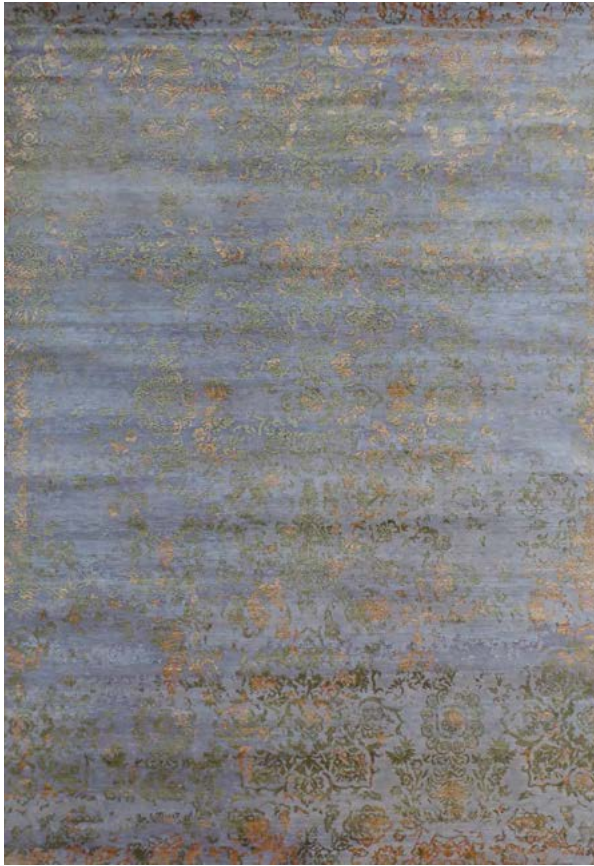
200
x
300



640-AD2-033

HERITAGE

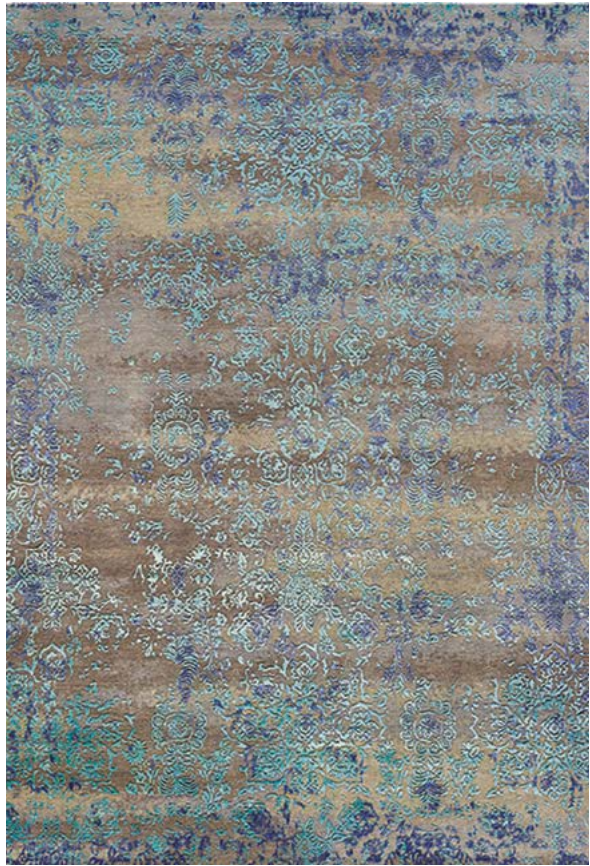
Being modern does not mean disengage from your heritage.



5100-L1+R3



5100-655



5100-225

Quality:
Handknotted

Composition:
Wool &
Bamboo Silk

170
x
240

200
x
300



Photo credit: Luc Viatour



HERITAGE SCOTTISH

Being modern does not mean disengage from your heritage.



5100-SC-L1R3



5100-SC-L2R2



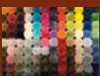
5100-SC-N4Q4

Quality:
Handknotted
100 knots

Composition:
Wool &
Bamboo Silk

170
x
240

200
x
300



SILKY

Emerging from the dark night of the Soul into the penetrating Light of consciousness.



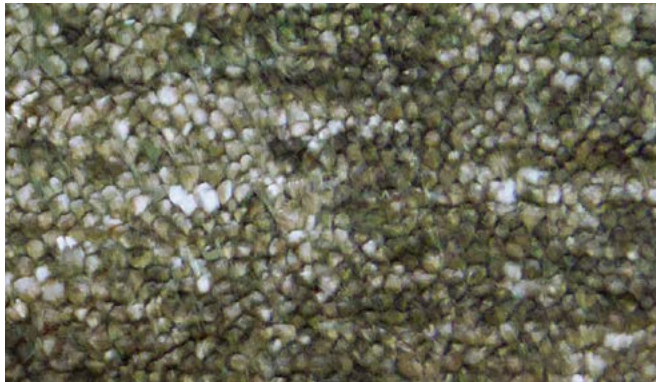
3059-0



3059-15



3059-80



3059-R3



3059-56



3059-57



3059-632

Quality:
Handknotted
80 knots

Composition:
100%
Bamboo Silk -
Handspun Yarn

170
x
240

200
x
300

300
x
400

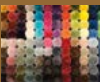


Photo Credit: Karine Bonjean





SILKY DESIGN

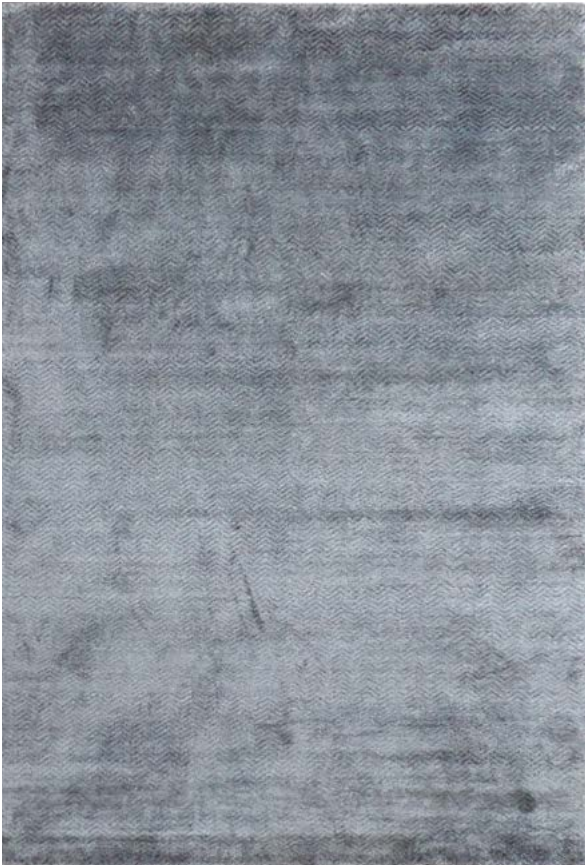
Tradition and modernity are subtly melted.



3060-52



3061-632



3060-DUN5657

Quality:
Handknotted
80 knots

Composition:
100%
Bamboo Silk -
Handspun Yarn

170
x
240

200
x
300



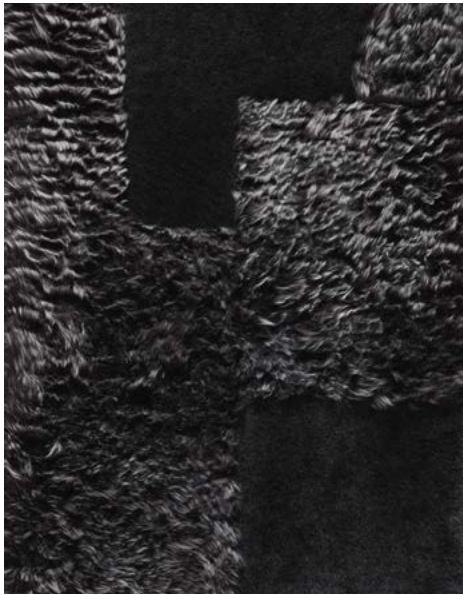
BAIKAL

When luxury meets sensuality.



22

3111-PALO57



3111-BLO55



3111-BR57



3111-BLO632



3111-PASH85



3111-BLSH00

Quality:
Handmade

Composition:
100%
Lambswool



3111-BLO630

23



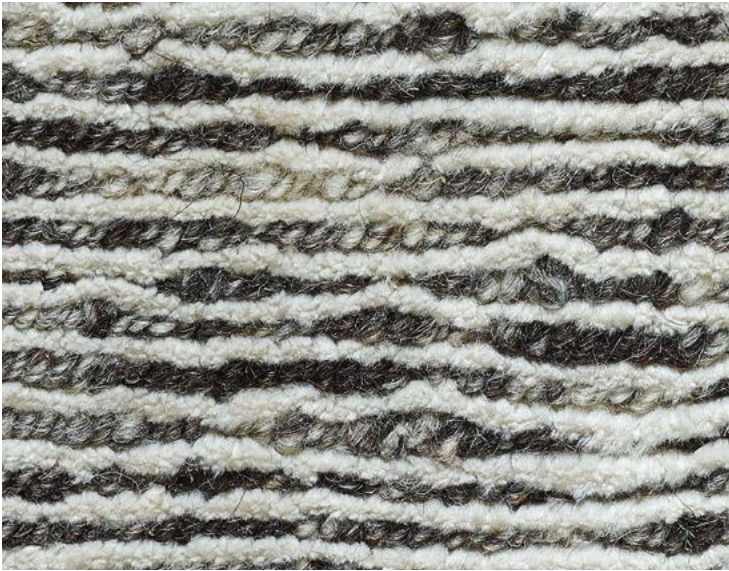
Photo Credit: The National Golf, Bruxelles

MAJESTIC

Simplicity is the keynote of all true elegance.



3080-L1



3080-600



3080-056

Quality:
Handknotted
80 knots

Composition:
Bamboo silk &
handspun wool

170
x
240

200
x
300

300
x
300



TENCELLA

Virtuous and bright for an imperial result.



6036-30



6036-47



6036-54



6036-56



6036-58



6036-600



6036-632

Quality:
Handtufted

Composition:
100% Tencel

200
x
300

300
x
400



Photo Credit: Isabelle Leclercq - Créatrice d'univers - Photo Serge Anton





SIENA

Why can you not be both gentle and rough?



3666-355



3666-221



3666-680

Quality:
Handknotted

Composition:
Bamboo Silk
and Jute

170
x
240

200
x
300

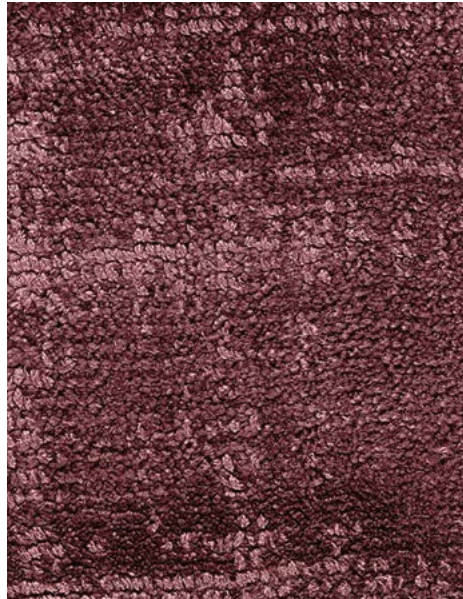


ERASED

This tip sheared rug is perfect for a vintage effect.



2174-56



2174-K3



2174-57



2174-632



2174-J12



2174-C032

Quality:
Handwoven

Composition:
100% Viscose

140
x
200

170
x
240

200
x
300

300
x
400





ANNAPURNA

The vegetable silk is soft, the brightness changes according to the light.



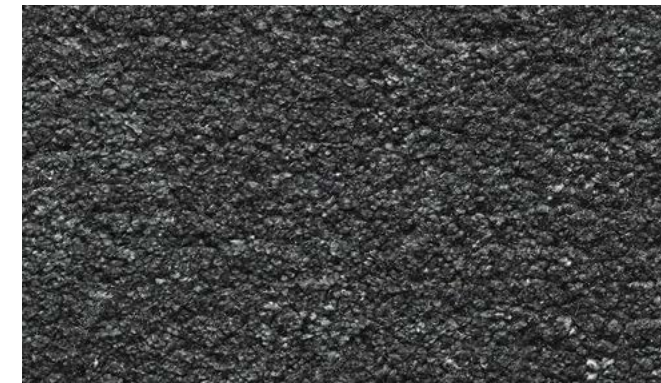
2170-04



2170-29



2170-N2



2170-57



2170-K11



2170-J1

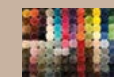
Quality:
Handtufted

Composition:
100% Viscose

170
x
240

200
x
300

300
x
400



MUSTI

Intimate mix and match.



2175-632



2175-55



2175-57

Quality:
Handtufted

Composition:
50% Wool
50% Viscose

140
x
200

170
x
240

200
x
300



Photo Credit: Isabelle Leclercq - Créatrice d'Univers - Photo Serge Anton



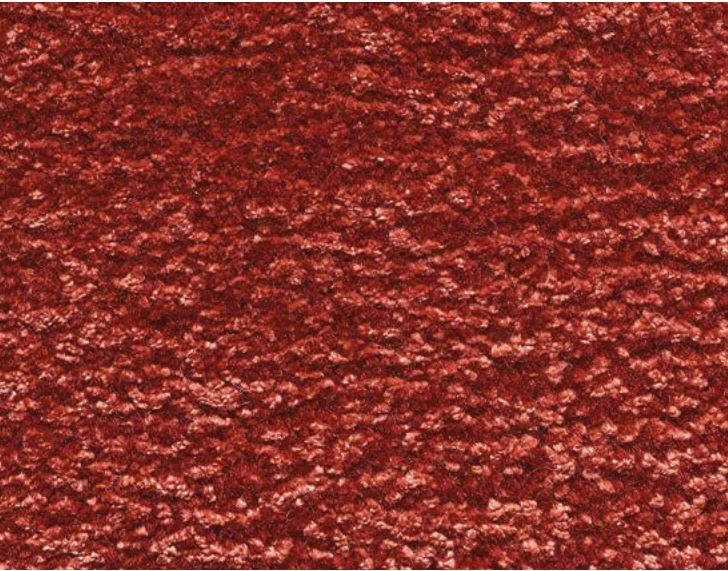


BANGKOK

A subtle blend of wool and viscose in spicy colours.



2171-A1+L1



2171-B2+J8



2171-C2+L2

Quality:
Handtufted

Composition:
60% New
Zealand Wool,
40% Viscose

170
x
240



SAHARA

Whether you are spicy or delicate, you will shine!



2170-CA444



2170-CA999

Quality:
Handtufted

Composition:
100% Viscose

170
x
240

200
x
300





FAUX SILK

Endless brightness.



ZEN
5575-636



ZEN
5575-03



ZEN
5575-56



BELLBIRD
5576-03



BELLBIRD
5576-585



CLARITY
5577-57



BELLBIRD
5576-85



CLARITY
5577-04



CLARITY
5577-632

Quality:
Tufted

Composition:
100% PA

200
x
300

300
x
400



FAUX SILK

Shine bright like a diamond.



PAX
5570-57



PAX
5570-85



PAX
5570-330



AFFINITY
5574-57



AFFINITY
5574-32



MILAN
5572-330



AFFINITY
5574-221



MILAN
5572-78



MILAN
5572-632

Quality:
Tufted

Composition:
100% PA

200
x
300

300
x
400



PAX 5570-330
Photo credit: Hgroup - bibihome

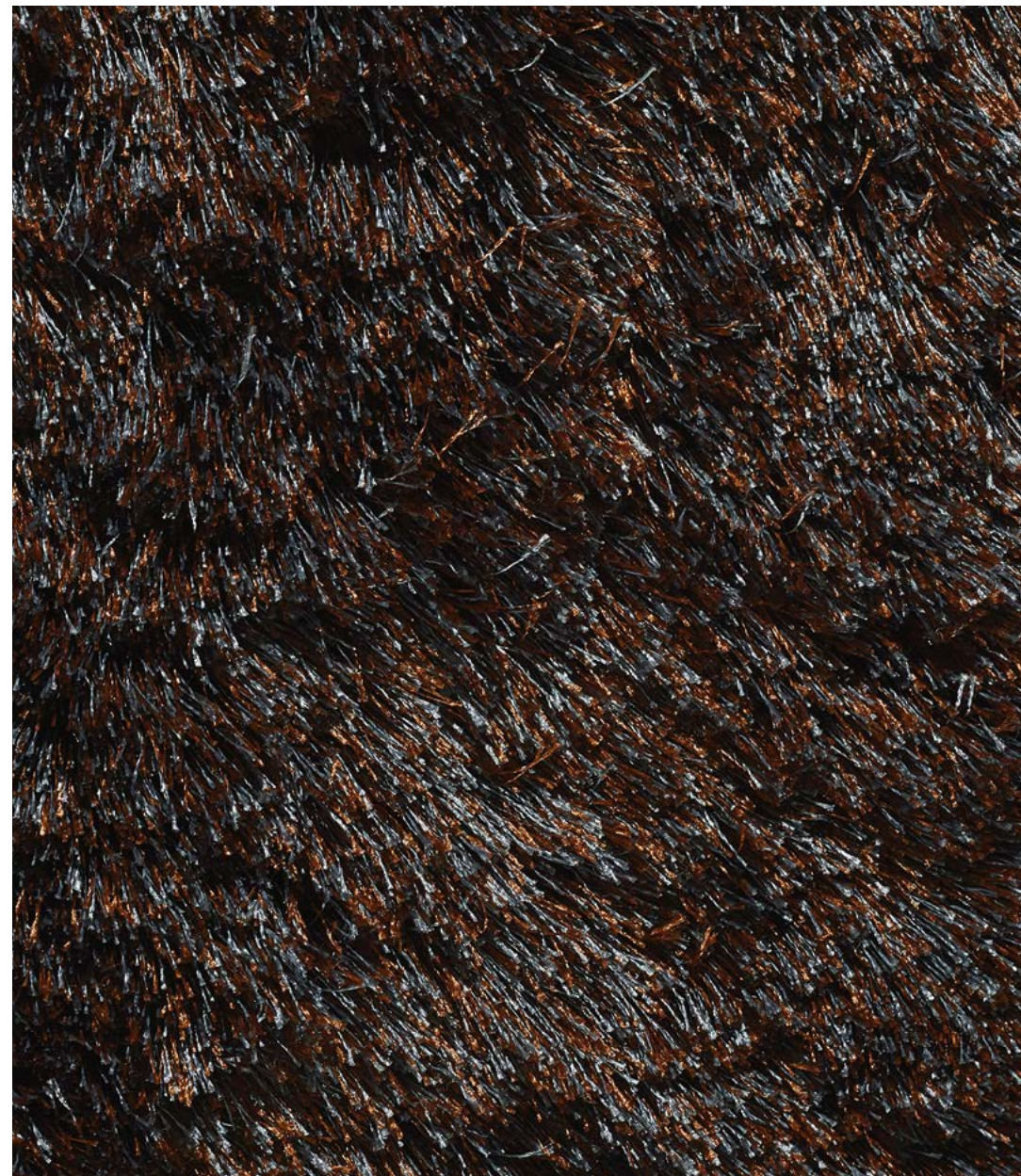


5512-55

Photo Credit: Art Rotana – Amway Islands

BERGAMO

Energy is contagious.



5512-853



5512-635



5512-55

Quality:
Handwoven

Composition:
100%
Polyester

170
x
240

200
x
300



LAURA

Relax in a plush atmosphere.



3543-500



3543-632

Quality:
Handwoven

Composition:
Mix Polyester,
Wool & Viscose

140
x
200

170
x
240

200
x
300



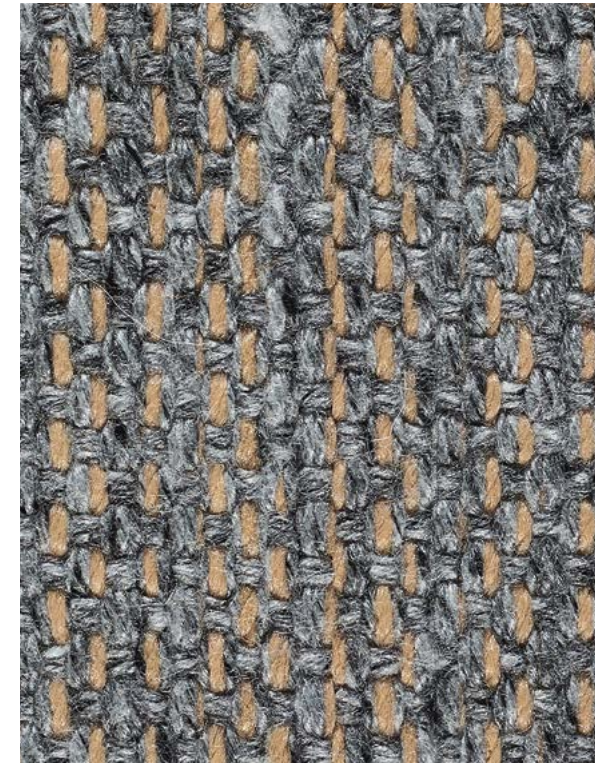


HAMILTON

Should we invite Coco for dinner?



5908-00



5908-57



5908-225



5908-400



5908-114



5908-500

Quality:
Handwoven

Composition:
70% mix
Wool/Viscose
and 30% PP

140
x
200

170
x
240

200
x
300

300
x
400



MIC-MAC

Scandinavian then, at other times ethnic.



50 3030-50



3030-52



3030-35



3030-19



3030-33



3030-CH632



3030-680

Quality:
Handwoven

Composition:
100% New
Zealand Wool

70
x
250

140
x
200

170
x
240

200
x
300



Photo Credit: Pol Quadens - 155Espace Déco - Vanessa Bruffaerts



KITO

Elegance is all about being discreet.



4836-I11



4836-H2



4836-H10



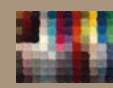
4836-D3

Quality:
Handknotted
25 knots

Composition:
Handspun
Wool

170
x
240

250
x
300



WOOLLY

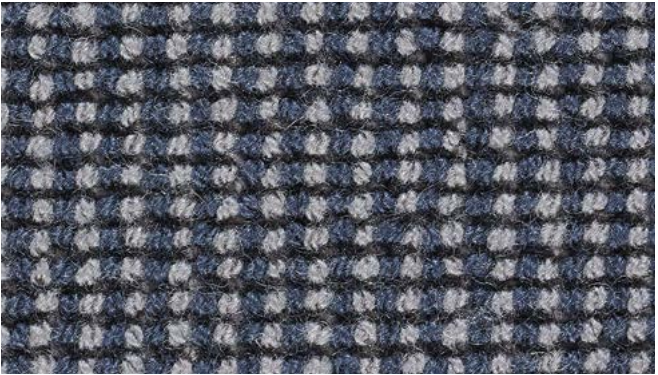
Fast and rigorous.



PL124



RM180



SA130



SS126



VE193

Quality:
Tufted

Composition:
Wool



Photo Credit: BWC



MORRISON

Tracing my Scottish roots.



5905-355



5905-916



5905-999

Quality:
Handwoven

Composition:
100% Wool

170
x
240

200
x
300

Sizes
without
fringes



BHUTAN

A contrast in colours and personality.



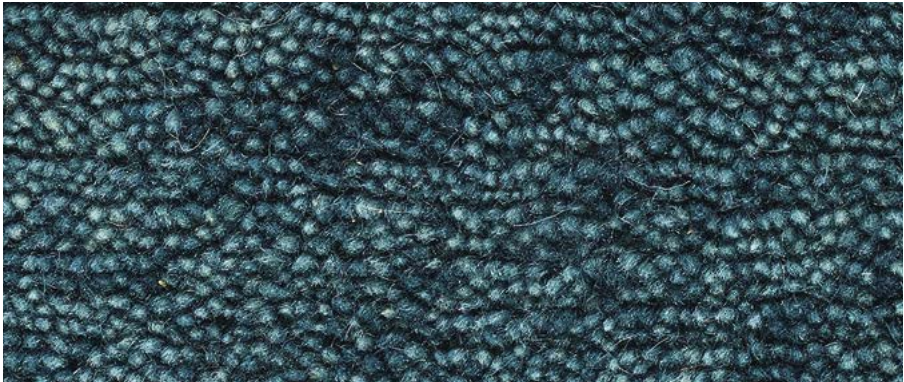
4835-A2



4835-C1



4835-C2



4835-I11

Quality:
Handknotted
30 Knots

Composition:
100% New
Zealand Wool

170
x
240

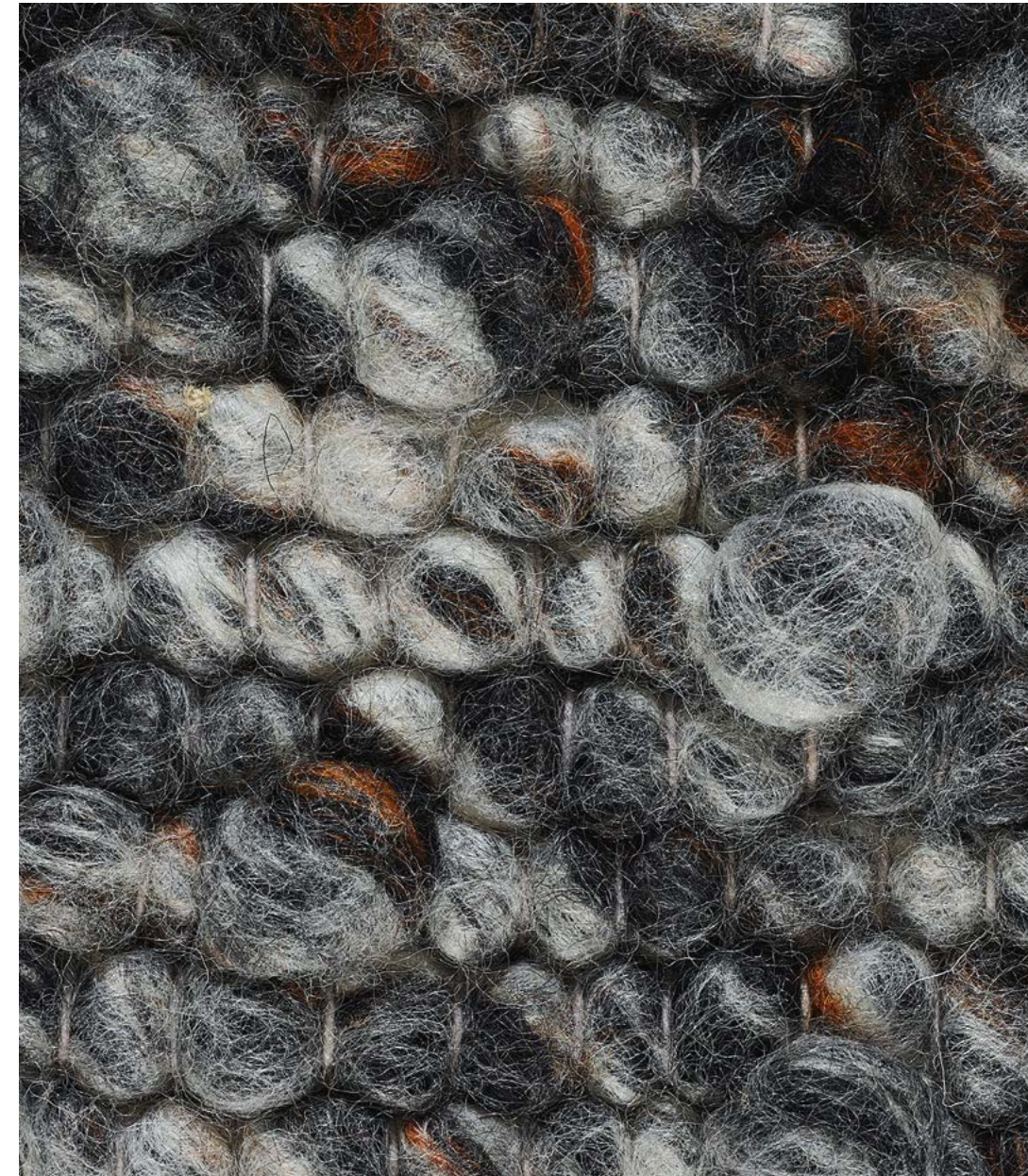
200
x
300





LOOPING

Natural, perfectly imperfect.



5907-103



5907-054



5907-887

Quality:
Handwoven
with bumps

Composition:
100% Wool

170
x
240

200
x
300



WAVES

Tumultuously hygge to reach a comfortzone.



62 8091-57



8091-632



8091-56

Quality:
Handwoven

Composition:
100% Wool

170
x
240

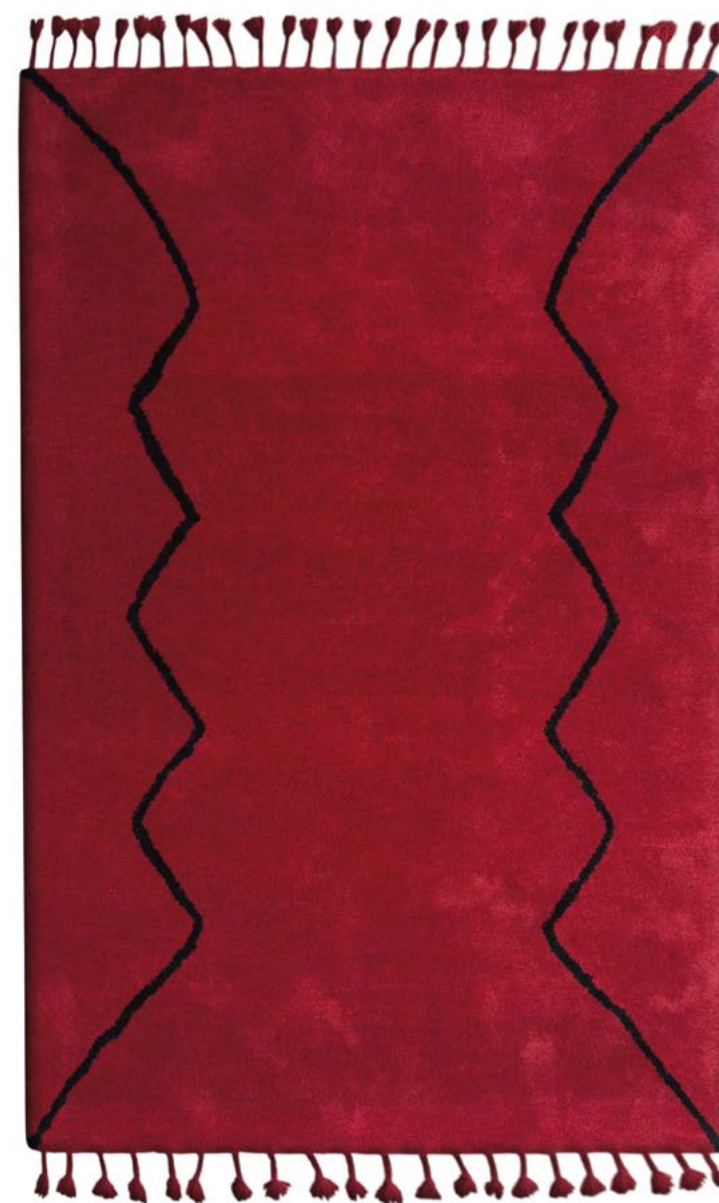
200
x
300





BOUJAD

You could say I am a bit of a nomad!



8908-MONT-G8



8908-CRO-C4

Quality:
Handtufted

Composition:
100% New
Zealand Wool

140
x
200

170
x
240

Sizes
without
fringes



ZAGORA

You can say again I am a bit of a nomad!



8906WB-KAD-500



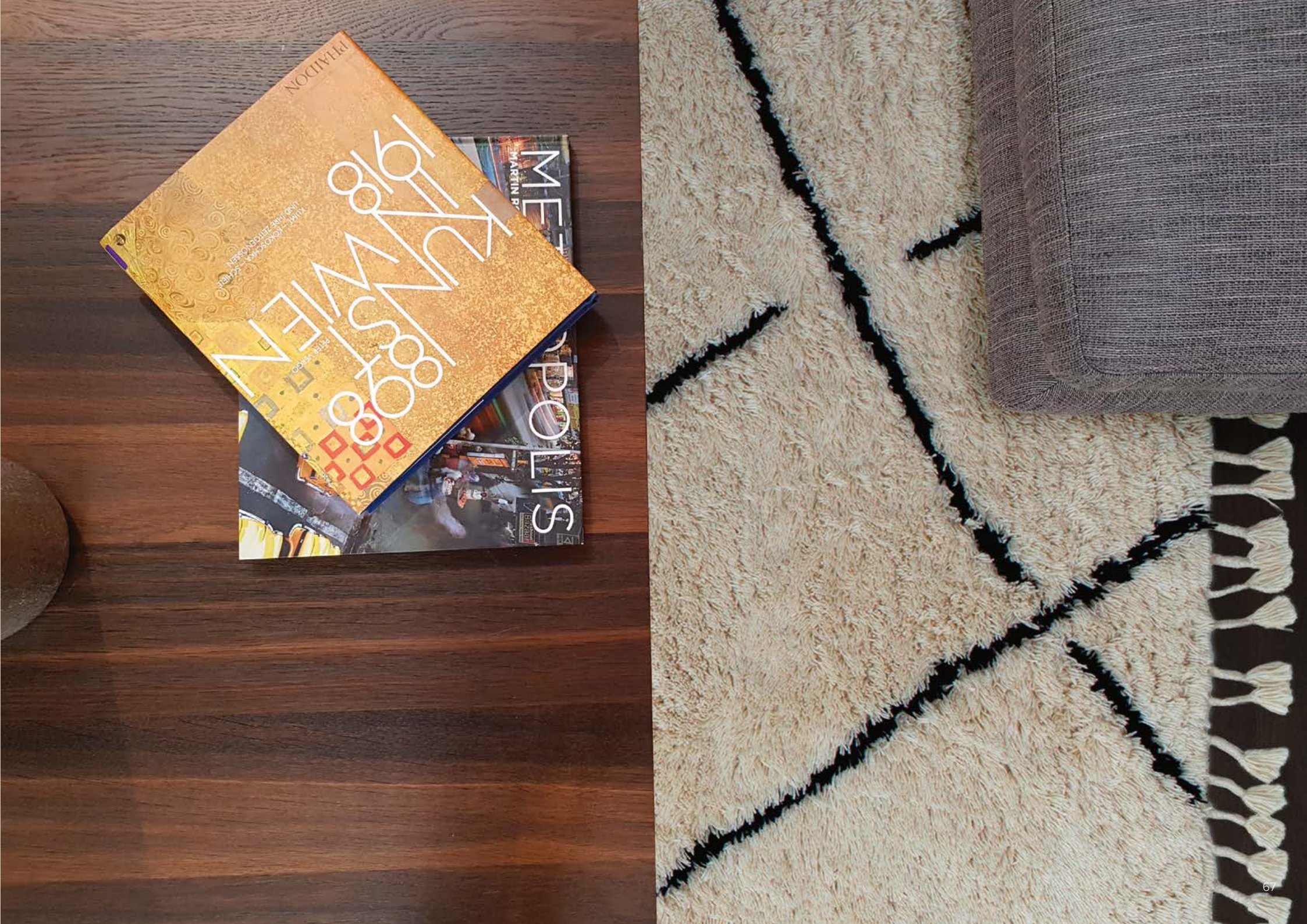
8906WB-NOM-91

Quality:
Handtufted

Composition:
100% Bikaner

170
x
240

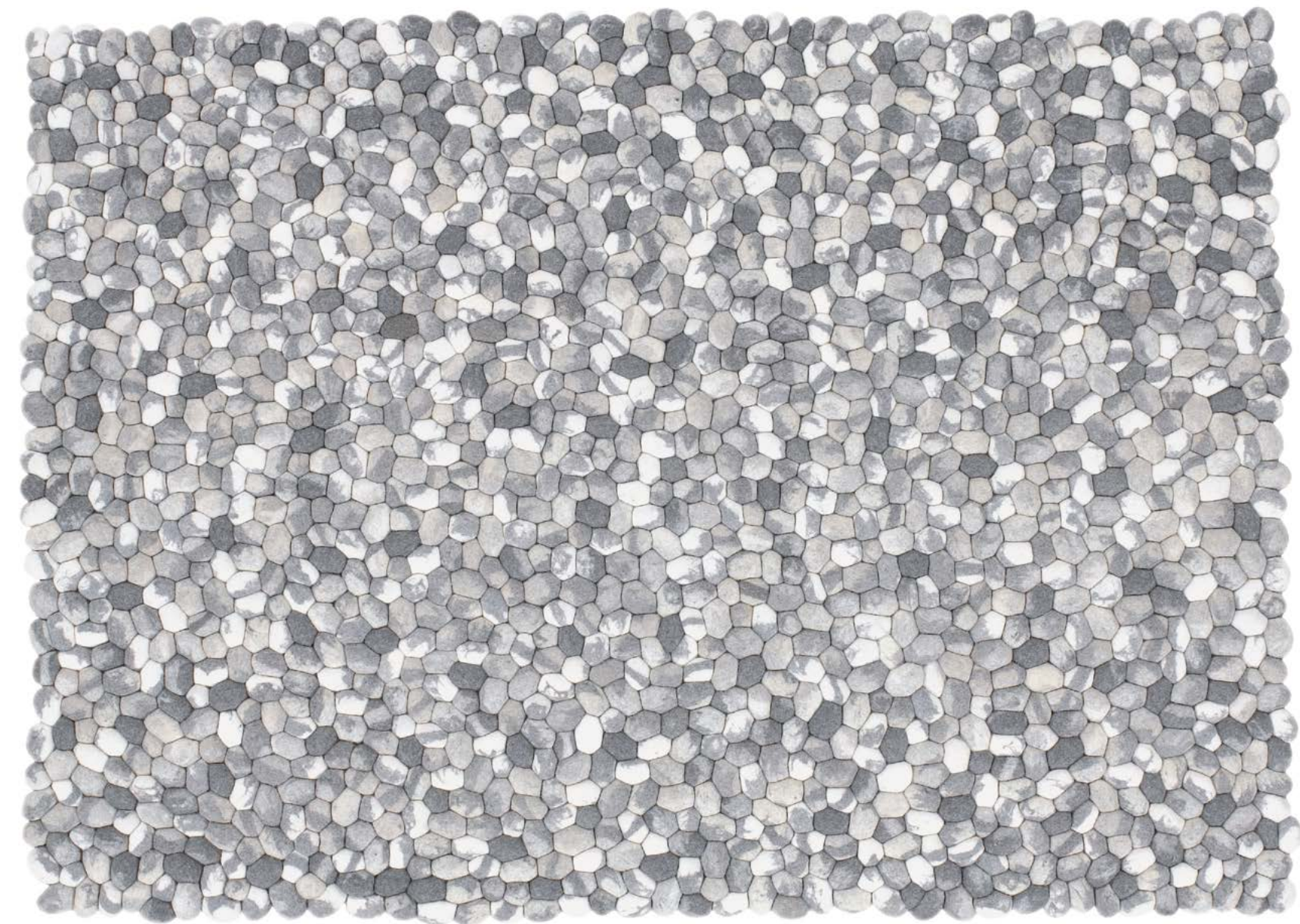
200
x
300





ON THE ROCKS

Creating a relaxing place.



Quality:
Handcrafted

Composition:
100% Felted
Merinos Wool

170
x
240

200
x
300

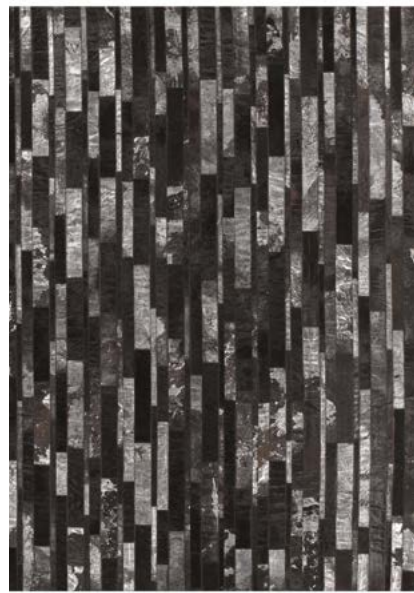


STAR & STARLESS

Limitless or square, that is the question!



3115-0



3115-50



3118-500



3118-56



3118-CHEV500



3118-DIA500

Quality:
Handcrafted

Composition:
100%
Cowskin

170
x
240

200
x
300



ANNAPURNA



2170-04 2170-N2 2170-57

P33

PRICE RANGE



Handtufted

100% Viscose

Pile Height: 10mm

Total Weight/m²: 5.5kg

Sizes: 170x240cm, 200x300cm, 300x400cm

Biggest size possible on demand

BAIKAL



3111-PALO57 3111-PA85 3111-BLO632

P22

PRICE RANGE



Handmade

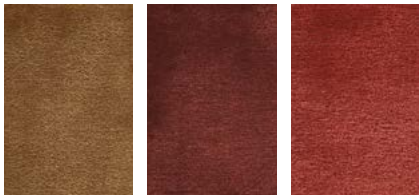
100% Lambswool

Pile Height: Low and high pile

Sizes: made to measure

Biggest size possible on demand

BANGKOK



2171-A1L1 2171-C2L2 2171-B2J8

P37

PRICE RANGE



Handtufted

60% New Zealand Wool, 40% Viscose

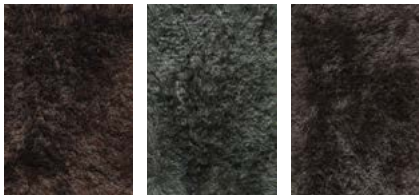
Pile Height: 10mm

Total Weight/m²: 4.1kg

Sizes: 170x240cm

Biggest size possible on demand

BERGAMO



5512-853 5512-635 5512-55

P45

PRICE RANGE



Handwoven

100% Polyester

Pile Height: 45 mm

Total Weight/m²: 5kg

Sizes: 170x240cm, 200x300cm

Any size possible on demand

BHUTAN



4835-A2 4835-C2 4835-C1

P58

PRICE RANGE



Handknotted (30 Knots)

100% New Zealand Wool

Pile Height: 10mm

Total Weight/m²: 4.6kg

Sizes: 170x240cm, 200x300cm

Biggest size possible: 500x1000cm

BOUJAD



8908-CRO-C4 8908-MONT-G8

P65

PRICE RANGE



Handtufted

100% New Zealand Wool

Pile Height: 20mm

Total Weight/m²: 3kg

Sizes: 140x200cm, 170x240cm

Biggest size possible: 400cm wide

ERASED



2174-56 2174-57 2174-K3

P30

PRICE RANGE



Handwoven

100% Viscose

Pile Height: 6mm

Total Weight/m²: 4.5kg

Sizes: 140x200cm, 170x240cm, 200x300cm, 300x400cm

Any size possible (max width 4m)

FAUX SILK



5575-636 5576-585 5575-04

P41

PRICE RANGE



Tufted

100% PA

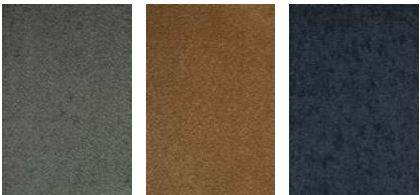
Pile Height: See collection

Total Weight/m²: See collection

Sizes: 200x300cm, 300x400cm

Any size possible rolls (max width 4m)

FAUX SILK



5570-57 5572-330 5574-221

P42

PRICE RANGE



Tufted

100% PA

Pile Height: See collection

Total Weight/m²: See collection

Sizes: 200x300cm, 300x400cm

Any size possible rolls (max width 4m)

HAMILTON



5908-00 5908-114 5908-500

P49

PRICE RANGE



Handwoven

70% mix Wool/Viscose and 30% PP

Pile Height: flat

Total Weight/m²: 2.6kg

Sizes: 140x200cm, 170x240cm, 200x300cm, 300x400cm

Biggest size possible: 400 cm wide

HERITAGE



5100-L1R3 5100-655 5100-225

P14

PRICE RANGE



Handknotted

Wool & Bamboo Silk

Pile Height: 5 and 7 mm

Total Weight/m²: 4.25kg

Sizes: 170x240cm, 200x300cm

Biggest size possible: 850x2000cm

HERITAGE SCOTTISH



5100-SC-L1R3 5100-SC-L2R2 5100-SC-N4Q4

P17

PRICE RANGE



Handknotted (100knots)

Wool & Bamboo Silk

Pile Height: 5 and 7 mm

Total Weight/m²: 4.25kg

Sizes: 170x240cm, 200x300cm

Biggest size possible: 850x2000cm

KITO



4836-D3 4836-H2 4836-H10

P53

PRICE RANGE



Handknotted (25 knots)

Handspun Wool

Pile Height: Flat

Total Weight/m²: 3kg

Sizes: 170x240cm, 250x300cm

Biggest size possible: 500x800 cm

LAURA



3543-56 3543-500 3543-632

P46

PRICE RANGE



Handwoven

Mix Polyester, Wool & Viscose

Pile Height: 4.5 cm

Total Weight/m²: 6.5kg

Sizes: 140x200cm, 170x240cm, 200x300cm

LEGACY



4900-GEN330 4900-GEN556

P6

PRICE RANGE



Handknotted

Wool & Bamboo Silk

Pile Height: 0.5cm

Total Weight/m²: 3.6kg

Sizes: 170x240cm, 200x300cm, 300x400cm

Biggest size possible : 850x2000cm

LONDON



640-AD2-033

P13

PRICE RANGE



Handtufted

80% New Zealand Wool & 20% Viscose

Pile Height: 10mm

Total Weight/m²: 4kg

Sizes: 200x300cm

Biggest size possible: 5m wide

LOOPING



5907-054 5907-103 5907-887

P61

PRICE RANGE



Handwoven with bumps

100% Wool

Pile Height: 2.25cm

Total Weight/m²: 4.75kg

Sizes: 170x240cm, 200x300cm

Biggest size possible: 600x600cm

MAJESTIC



3080-056 3080-600 3080-L1

P25

PRICE RANGE



Handknotted (80 knots)

Bamboo silk & handspun wool

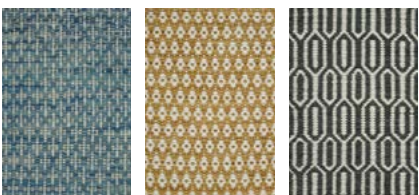
Pile Height: 9mm

Total Weight/m²: 3.5kg

Sizes: 170x240cm, 200x300cm, 300x300cm

Biggest size possible on demand (max 600x1000 cm)

MIC-MAC



3030-19 3030-33 3030-35

P50

PRICE RANGE



Handwoven

100% New Zealand Wool

Pile Height: Flat Dhurry

Total Weight/m²: 2.6kg

Sizes: 70x250mm, 140x200cm, 170x240cm, 200x300cm

Any size possible

MORRISON



5905-355 5905-999 5905-916

P57

PRICE RANGE



Handwoven

100% Wool

Pile Height: Flat

Total Weight/m²: 3kg

Sizes: 170x240cm, 200x300cm

Any size possible

MUSTI



2175-55 2175-57 2175-632

P34

PRICE RANGE ★ ★ ★
Handtufted
50% Wool and 50% Viscose
Pile Height: 8mm
Total Weight/m²: 3.6kg
Sizes: 140x200cm, 170x240cm, 200x300cm
Biggest size possible: 400 cm wide

ON THE ROCKS



805-56

P69

PRICE RANGE ★ ★ ★
Handcrafted
100% Felted Merinos Wool
Pile Height: 35mm
Total Weight/m²: 6kg
Sizes: 170x240cm, 200x300cm
Any size possible

REVENGE



4850-REV632 4850-REV225

P5

PRICE RANGE ★ ★ ★
Handknotted
New Zealand Wool, Viscose
Pile Height: 9mm & 6mm
Total Weight/m²: 4kg
Sizes: 170x240cm
Biggest size possible 600x1000cm

SAHARA



2170-CA444 2170-CA999

P38

PRICE RANGE ★ ★ ★
Handtufted
100% Viscose
Pile Height: 10mm
Total Weight/m²: 5.8kg
Sizes: 170x240cm, 200x300cm
Biggest size possible 600x1000cm

SIENA



3666-221 3666-355 3666-680

P29

PRICE RANGE ★ ★ ★
Handknotted
Bamboo Silk and Jute
Pile Height: 6mm
Total Weight/m²: 1.8kg
Sizes: 170x240cm, 200x300cm
Biggest size possible: 4x10m

SILKY



3059-0 3059-15 3059-56

P18

PRICE RANGE ★ ★ ★
Handknotted (80 knots)
100% Bamboo Silk - Handspun Yarn
Pile Height: 8 mm
Total Weight/m²: 4.3kg
Sizes: 170x240cm, 200x300cm, 300x400cm
Biggest size possible: 400x600 cm

SILKY DESIGN



3060-52 3061-632 3060-DUN5657

P21

PRICE RANGE ★ ★ ★
Handknotted (80 knots)
100% Bamboo Silk - Handspun Yarn
Pile Height: 8 mm
Total Weight/m²: 4.3kg
Sizes: 170x240cm, 200x300cm
Biggest size possible: 400x600 cm

STAR & STARLESS



3115-00 3118-500 3118-CHEV500

P70

PRICE RANGE ★ ★ ★
Handcrafted
100% Cowskin
Pile Height: Flat
Total Weight/m²: 2.25kg
Sizes: 170x240cm, 200x300cm
Any size possible on demand

SIGNATURE JF D'OR



640-JFP4-444

P10

PRICE RANGE ★ ★ ★
Handtufted
New Zealand Wool and Viscose
Pile Height: 10 nn
Total Weight/m²: 4kg
Sizes: 180x301cm
Any size possible on demand

SIGNATURE JULES WABBES



640-JWQD4J1

P10

PRICE RANGE ★ ★ ★
Handtufted
New Zealand Wool and Viscose
Pile Height: 10mm
Total Weight/m²: 4kg
Sizes: 200x300cm
Any size possible on demand

SIGNATURE LH DE KONINCK



640-LHDKV1SP

P10

PRICE RANGE ★ ★ ★
Handtufted
100% New Zealand Wool
Pile Height: 10 mm
Total Weight/m²: 4kg
Sizes: 200x300cm
Any size possible on demand

SIGNATURE THOMAS KING



640-TKDOD-225 640-TKGRT-500

P9

PRICE RANGE ★ ★ ★
Handtufted
New Zealand Wool and Viscose
Pile Height: 10 mm
Total Weight/m²: 4kg
Sizes: Golden Ratio - 200x315mm, Dodeca - 250x330 mm
Biggest size possible: 5m wide

TENCELLA

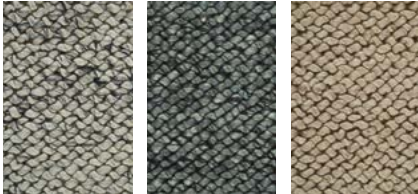


6036-30 6036-47 6036-54

P26

PRICE RANGE ★ ★ ★
Handtufted
100% Tencel
Pile Height: 1.2cm
Total Weight/m²: 5.1kg
Sizes: 200x300cm, 300x400cm
Biggest size possible: 500X1300 cm

WAVES



8091-56 8091-57 8091-632

P62

PRICE RANGE ★ ★ ★
Handwoven
100% Wool
Pile Height: 15mm
Total Weight/m²: 4.5kg
Sizes: 170x240cm, 200x300cm
Biggest size possible 400x600 cm

WOOLLY



PL124-S RM180-S SS126-B2

P54

PRICE RANGE ★ ★ ★
Tufted
Wool
Biggest size possible: 400x500 cm

ZAGORA



8906WB-KAD-500 8906WB-NOM-91

P66

PRICE RANGE ★ ★ ★
Handtufted
100% Bikaner
Pile Height: 45 mm
Total Weight/m²: 3.8kg
Sizes: 170x240cm, 200x300cm

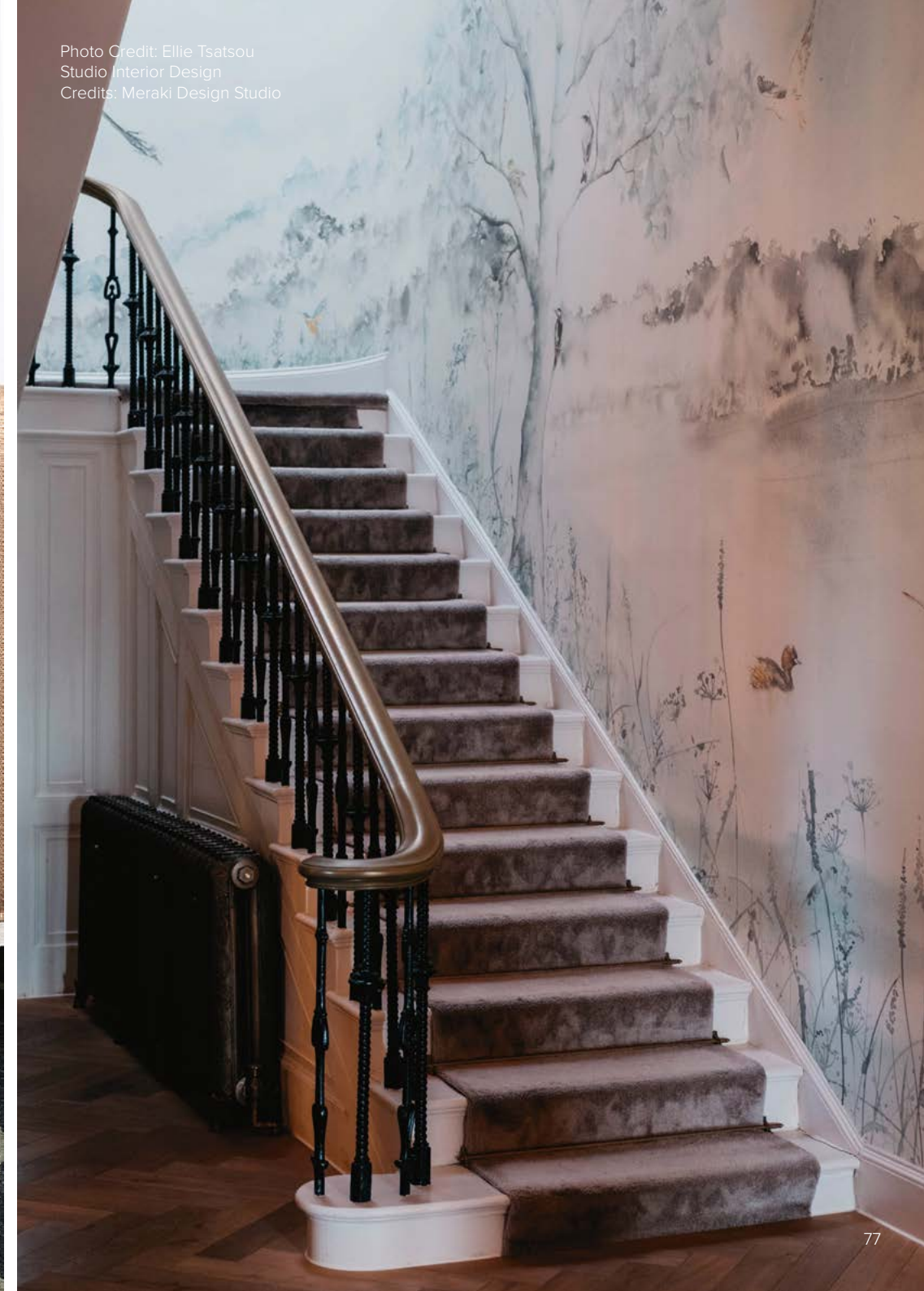


Photo Credit: Didier Delmas,
Hotel: Les Roches Blanches - Cassis
Architect: Monika Kappel



Photo Credit: WP GORDIJNEN



Photo Credit: Didier Delmas,
Hotel: Les Roches Blanches - Cassis
Architect: Monika Kappel



Photo Credit: Ellie Tsatsou Studio - Interior Design credits: Meraki Design Studio

FOR PROJECTS OR SPECIAL
DESIGNS CONTACT US

export@angelorugs.com

